



9 Research Drive
Amherst, MA 01002

T (413) 256-0202
F (413) 256-1092
www.neeinc.com

CASE STUDY

**SHAW'S SUPERMARKET, INC
CARVER, MA**

STORMWATER MANAGEMENT

New England Environmental, Inc. provided multiple environmental consulting and restoration services during the planning and development of a supermarket, retail stores, restaurant, and associated parking in Carver, Massachusetts. NEE delineated existing wetland resource areas, filed necessary wetland permits, developed a planting plan, and conducted the restoration of the constructed wetland areas on site.



Aerial Photo of Site Pre-construction.

Runoff was diverted from impervious surfaces into catch basins with deep sumps and hoods to capture sediment and pollutants before being discharged into a constructed Extended Wet Detention Basin. The Stormwater Management Plan was designed to remove approximately 86.5% of the Total Suspended Solids (TSS) exceeding the 80% removal required by DEP.



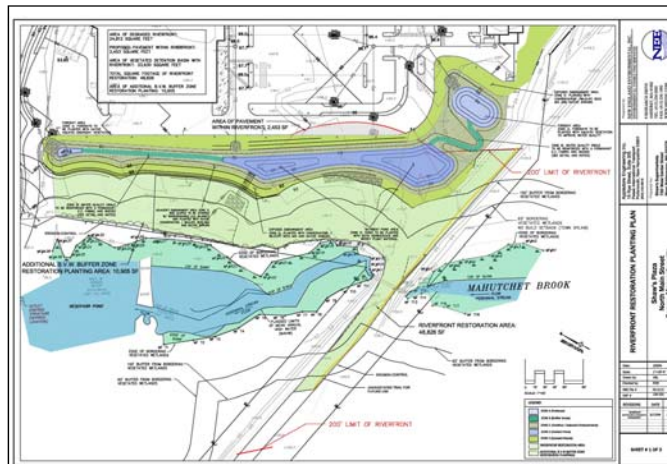
Water Quality Swale Pre-Plant Installation

Stormwater Basin Included:

- Inlets and forebays at each end
- Reinforced vegetated swale to treat low-flow runoff
- Deep sump in the center of the detention basin to settle particles for water quality treatment
- Installation of herbaceous and woody plant materials
- Site monitoring



Water Quality Swale 3 Months Post-Plant Installation



Riverfront Restoration Plan showing Stormwater management features: forebays, water quality swale, and nutrient ponds.