

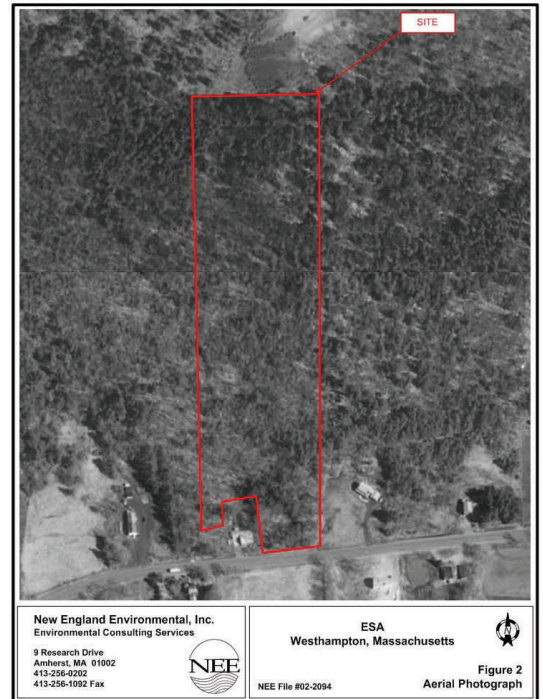


ENVIRONMENTAL SITE ASSESSMENT

Undeveloped Land Westhampton, MA

New England Environmental, Inc. (NEE) conducted this environmental site assessment for the Hilltown Community Development Corporation (CDC) on an undeveloped property in Westhampton, MA to evaluate the potential for impact from the release of oil or hazardous materials (OHM). The CDC was evaluating the parcel as a potential new Senior Center location. Historic uses of the Site included agricultural and logging.

A detailed history of the property with respect to OHM was developed through a Site reconnaissance visit. NEE reviewed the local and regulatory agency files pertaining to the Site and surrounding area, reviewed the UMass collection of historical aerial photographs, conducted interviews, and completed a Transaction Screen Questionnaire. This **Level I ESA** was conducted in conformance with the ASTM Standard Practice E1527-00 *Standard Practice for Environmental Site Assessments: Phase I Environmental Site Assessment Process*.



MassGIS aerial photograph of the Site taken in 1997.

The wooded Site is currently unoccupied, and is zoned “R-1” for residential uses. The Site is a gently sloping forest, which includes maple, birch and pine species. The parcel has been undeveloped for over 50 years. A reconnaissance of the Site revealed apparent illegal dumping of Automotive scrap parts, a Ford automobile, a Chevrolet automobile carcass, an old hay rake, and a washing machine. Unmarked metal containers were observed within one of the vehicles. NEE concluded that the potential for contamination of soil, groundwater, or sediments with Oil or Hazardous Materials (OHM) at the Site was moderate in this specific location.

NEE recommended evaluation of soil in the area of potential risk where the suspect materials and containers were observed.



Chevrolet and Ford Automobiles found during Site reconnaissance.

