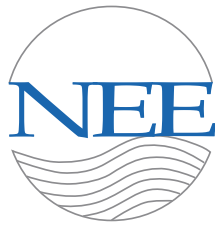


New England Environmental, Inc.

Environmental Consulting
15 Research Drive
Amherst MA 01002
(p) 413. 256. 0202
(f) 413. 256. 1092



www.neeinc.com

Case Study:

Girl Brook Watershed Assessment Hanover, New Hampshire

Project Summary

NEE was contracted by the Town of Hanover and Dartmouth College to conduct a survey and evaluation of the Girl Brook Watershed using GPS/GIS technologies and survey techniques to establish channel cross sections and profiles at critical points throughout the watershed.

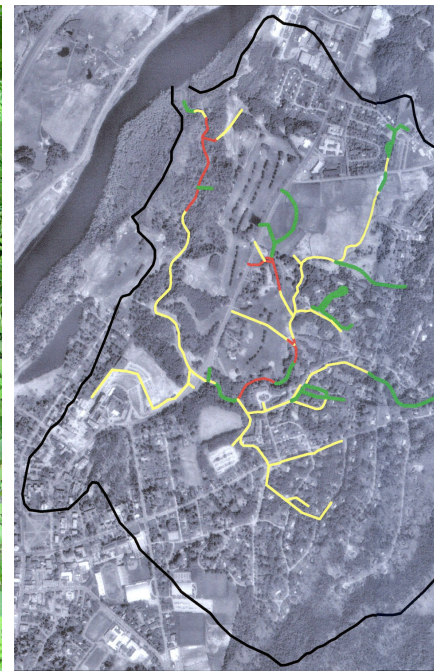
Girl Brook is an important natural and community resource that collects runoff from a watershed of approximately 1,230 acres. This watershed is associated with a highly developed area that includes a college campus as well as surrounding hillsides. The brook discharges into the Connecticut River approximately two miles north of the Ledyard Bridge in Hanover.

Strategies

- Conducted stream surveys to create cross sectional and longitudinal profiles
- Compared profiles to a “reference reach” or stable portion of stream
- Developed possible reasons for increased rates of erosion and sediment loading
- Used the assessments to assist in future restorations
- Mapped and documented all findings in GIS, photographic and video formats
- Provided restoration plans for the Brook

Achievements

NEE conducted public meetings to review results and discuss solutions to bank erosion in the Girl Brook Watershed. We then initiated bank restoration projects with the Town of Hanover, Dartmouth College, and the Pine Park Association.



Mapping and surveying the watershed (top left and above) and the map area and stream assessment (top right).